

**ALL INDIA INSTITUTE OF MEDICAL SCIENCES
CARDIO-THORACIC & NEURO-SCIENCES CENTRE**

ANSARI NAGAR, NEW DELHI-29

STORE SECTION(CNC)

Dated: 03.04.2025

TENDER CORRIGENDUM

The Tender No. 142/CNC/NIandINR/2024-25/St with Tender ID: 2025_AIMSD_849464_1 was published in CPP Portal (e-Procurement) on dated 15.02.2025 for the purchase of "CT Scan 256 Slice (On Turnkey and Buy Back Basis) - 01No." for the department of NI&INR, CNC, AIIMS. As per schedule the pre-bid meeting was held on 24/02/2025 at 03:00 PM wherein various bidders (M/s.Siemens Healthcare, M/s.Canon Medicals India, M/s.Wipro GE Healthcare and M/s.Philips India Ltd.) have attended the meeting and discussed their issues before the TSEC.

Upon the request of potential vendors & recommendation of TSEC, few amendments have been carried in the published specification.(Amended specification is attached at Annexure-I) The site plan/layout is attached at Annexure-II. The bid submission End date and Opening date are also being extended as under:-

Description	Existing	Amended as
Bid Submission End Date & Time	10-04-2025 at 04.00 pm	23-04-2025 at 04.00 pm
Bid Opening Date & Time	11-04-2025 at 04.00 pm	24-04-2025 at 04.00 pm

All remaining specifications/terms & conditions of floated tender will remain same. The bidder must see the above amendment and quote their product accordingly.

2025/3/4/25
Stores Officer (CNC)

SECTION - VII
TECHNICAL SPECIFICATION AND GENERAL POINTS

DEPARTMENT OF NI&INR

TECHNICAL SPECIFICATIONS			
Tender specifications for CT Scan 256 Slice on turnkey & buy-back basis.			
Department of Neuroimaging and Interventional Neuroradiology, AIIMS, New Delhi			
S. No.	(A) Features	(B) Essential Specifications	Amended
1.3	Integrated display panel and touch panels	Gantry front showing current scan parameters such as kV, mA., ECG etc	Read - Gantry front showing current scan parameters such as ECG, patient details, table location details, etc
1.4	Laser Lights	The gantry should have 3D positioning Laser	
2.3	kV	80- 140 kVp min range	80- 135 kVp min range
3.	TUBE ASSEMBLY		
3.1	Tube Voltage	80-140 kV or more	
4.1	Maximum capacity load	≥ 250 kg	Read > 220 kg
4.2	Scannable range	≥ 2000 mm	≥ 1980 mm
4.3	Longitudinal table speed	≥ 450 mm per sec	
4.4	Table Positioning	Reproducibility of table positioning (mm) should be +/- 0.25 mm	
4.5	Foot pedal/ switch	Four pairs of foot pedals should be supplied with the system	Read - two pairs
4.6	Table dimensions	Specify the width and length of the table, distance between gantry front and table base (minimum and maximum should be specified)	
5.1.6	Pitch	Pitch should be freely selectable between 0.5- 2 or more	Read - Pitch should be freely selectable between 0.5-1.6 or more
5.2	Scanning		
5.2.1	Slice Thickness	≤ 0.625 - 5 mm or more variable	

[Signatures and initials]

Rakesh
 27/3/25
 (Dr. P. RAJASHEKAR)

5.2.2	Cardiac imaging	Native temporal resolution of 90 msec or better with a single phase (monophasic) acquisition.	Read – 115 msec
6.2.11	Material density data	Electron Density and Atomic number visualization and processing.	Add - Effective Atomic number visualization and processing.
12.4	Single segment	Minimum native temporal resolution on single segment should be 115 msec or less.(Monophasic)	deleted
13.2.2		Remote access to image processing server from anywhere in hospital or from home-concurrent 10 users on window PCs or native mac OS (web-based client server solution with zero foot-print with 10 concurrent viewers) – specify number of users	Remove – from home
14.5.2	Integrated fusion	Multi-modality fusion- fusion between PET-CT, PET-MR, CT-MR, MR-SPECT, MR-MR, MR-US, CT-US etc.	Remove – MR-US, CT-US
14.5.12	Advanced Lung analysis	Segmentation of lungs; Evaluation: lung volume, mean lung density, and standard deviation; Calculation of emphysema index, subranges, percentiles, and clusters	Deleted as repeated
17.3	Advanced Iterative Reconstruction	Model-based Iterative reconstruction technology for all imaging protocols including brain (ADMIRE/IMR/VEO) or Deep Learning based equivalent technology which reduces dose while simultaneously improving low contrast detectability & spatial resolution and reduces image noise.	Model-based Iterative reconstruction technology for all imaging protocols including brain (ADMIRE/IMR/VEO/ASiR-V) or Deep Learning based equivalent technology which reduces dose while simultaneously improving low contrast detectability & spatial resolution and reduces image noise.
24.2		Mention the Heat load.	
25.	UPS (Emerson or APC or eaton/FUJI)		Read - (Emerson or APC or equivalent)
25.1	Power	Minimum 275 kVA UPS or of suitable rating to run the whole system for 30 min	Read – minimum full system backup time

A collection of handwritten signatures and initials in blue ink, including names like 'Shay', 'Sto', 'Rajeshwar', and 'SA', along with dates like '27/3/25'.

25.2	UPS for image processing server and workstations	2 X 30kVA additional UPS in parallel redundant configuration including batteries for the image processing server and workstation	
25.3	Minimum full system backup time	Power-rating compatible to whole machine load (including injector, cameras, computer system with all workstations, X-ray gantry system, emergency lights and peripheral system etc. Should provide back-to back full load for the entire unit including 15 minutes of back up using maintenance free batteries for 15 minutes. UPS and battery bank to be installed on the second floor of the complex.	Same as it is
26.	WARRANTY		
26.1		The Comprehensive onsite warranty shall be inclusive of the X-ray tube and all other items including all consumables like UPS batteries, printer, ACs, security devices, syringes, furniture items, drug trolley etc. necessary for working and maintenance of the machine including all 3rd party purchases.	Syringes may be deleted wherever it included in warranty

A collection of handwritten signatures and initials in blue ink, including names like 'Anya', 'Phsun', 'Rabeen', and 'Re', along with dates like '27/3/25'.

26.2	Software updates and upgrades	<p>All future software updates compatible with supplied hardware shall be free of cost during warranty and CMC period.</p> <p>The CT computing software system should offer built-in security controls to protect the system from vulnerabilities that can result in cyber attacks or inappropriate access to patient data. The built-in security should comply with the latest international standards of data security and encryption, as well as with existing regulations to protect personal and protected health information (e.g. GDPR, HIPAA, any local regulation), during the complete life of the system</p>	
26.3	Hardware refresh	In addition to above clause, Mandatory HW and SW upgrade of the post processing server and post processing computer system at the end of every 5 years from the date of installation.	Read - In addition to above clause, Mandatory HW and SW upgrade of the post processing server and post processing computer system at the end of 5 years from the date of installation.
26.4	On-site training	In house training should be provided for technical staff and radiologists from an application expert trained from the principal manufacturer for a minimum period of 12 weeks.	Read - In house training should be provided for technical staff and radiologists from an application expert trained from the principal manufacturer for a minimum period of 12 weeks in a staggered manner during the warranty period

Warranty:

- a) The bidders must quote for two years (onsite Comprehensive warranty (Inclusive of X-ray tube, all other items including all consumables like UPS batteries, printer, ACs, security devices, syringes, furniture items, drug trolley etc, all spares, all accessories, batteries, all 3rd party items and labor) from the date of satisfactory installation, commissioning, trial run, handing over and acceptance of the goods by the user department.

Amended as

Read - The bidders must quote for two years (onsite Comprehensive warranty (Inclusive of X-ray tube, all other items including all consumables like UPS batteries, printer, ACs, security devices, furniture items, drug trolley etc, all spares, all accessories, batteries, all 3rd party items and labour) from the date of satisfactory installation, commissioning, trial run, handing over and acceptance of the goods by the user department.

Deleted page 51, 24. Air conditioning as HVAC requirements already given in turnkey

The set up will be integrated with existing PACS of the hospital

[Handwritten signatures and notes in blue ink]

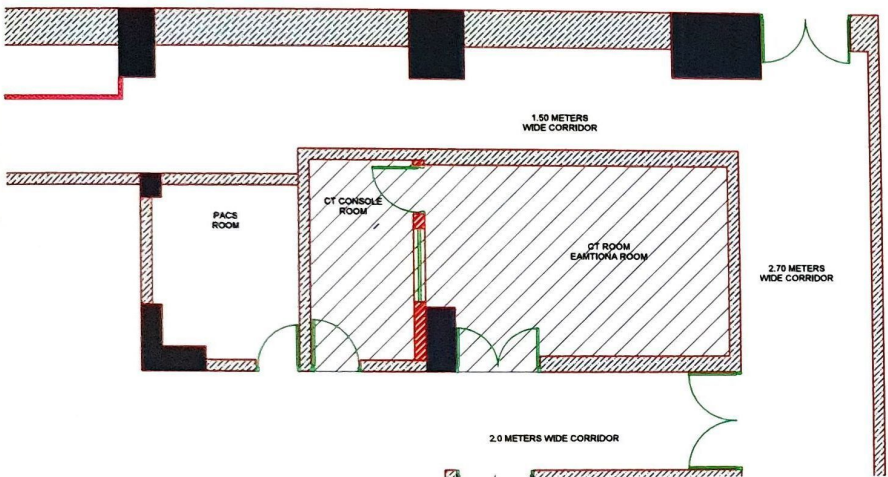
DR Saoyasachi Jain
Assistant Prof, MITR

(HOD, MITR)

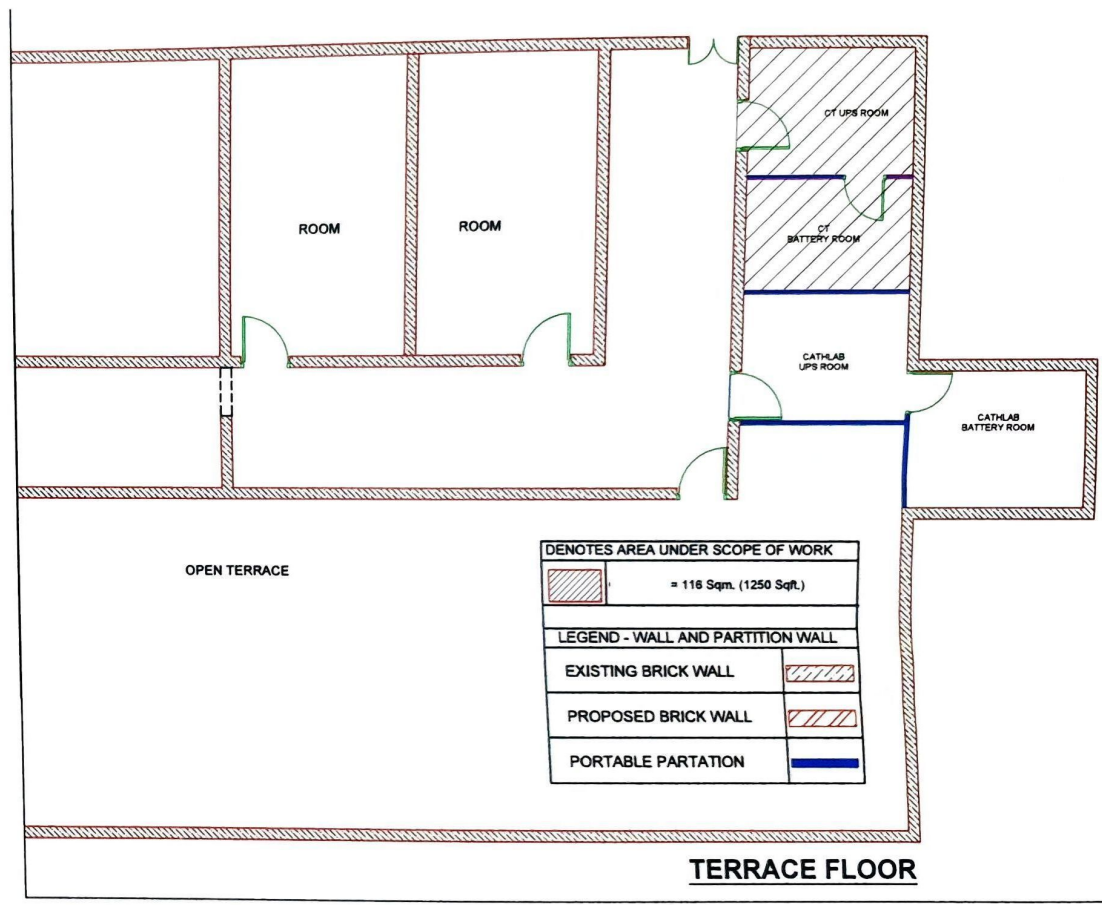
(Dr Anju Gang)

[Other illegible signatures and initials]

ANNEXURE-II



GROUND FLOOR



CT